



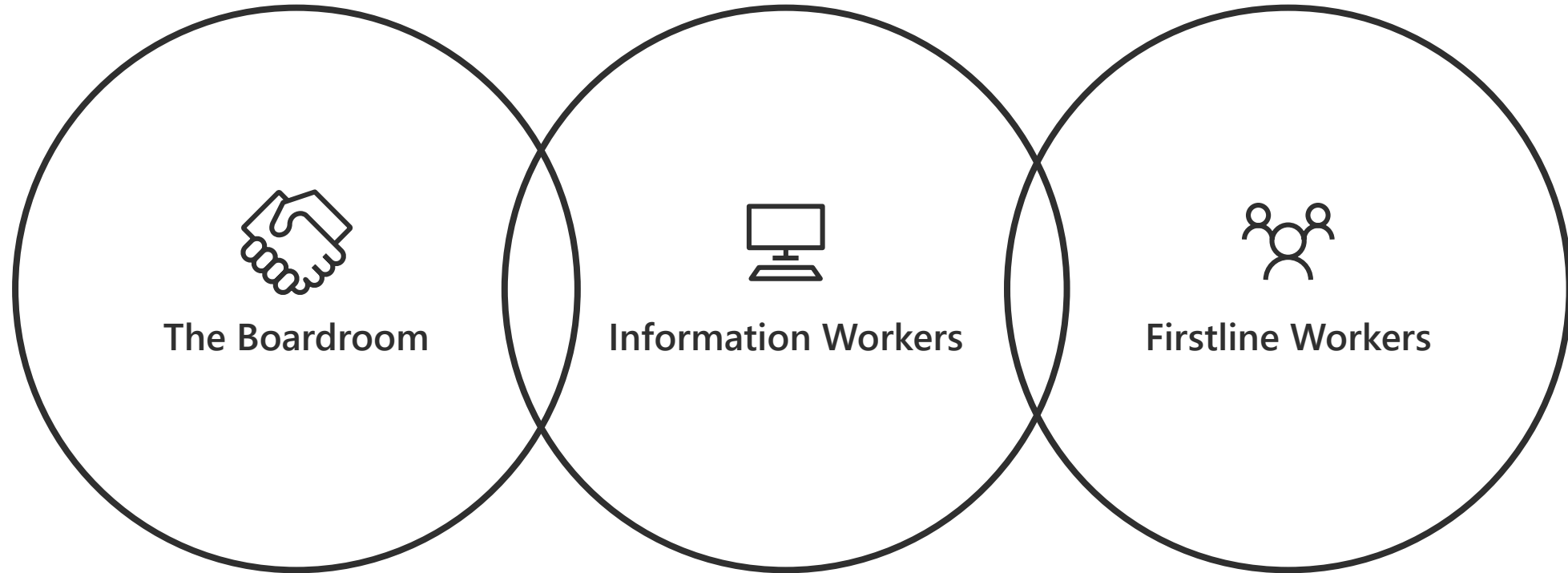
Our Firstline Vision

Ruchika Raj, Product Marketing Manager



Digital transformation

Digital transformation



Firstline Workers

First to engage your customers

First to represent your brand

First to see your products in action



Our Firstline Vision

Maximize the impact of the Firstline Workforce



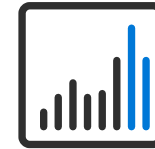
Foster culture and
community



Train and upskill
employees



Digitize business
process



Deliver real-time
expertise



Minimize risk and
cost



Microsoft 365 Enterprise

A complete, intelligent, secure solution to empower employees

Microsoft 365 E5

Microsoft 365 E3

Microsoft 365 F1



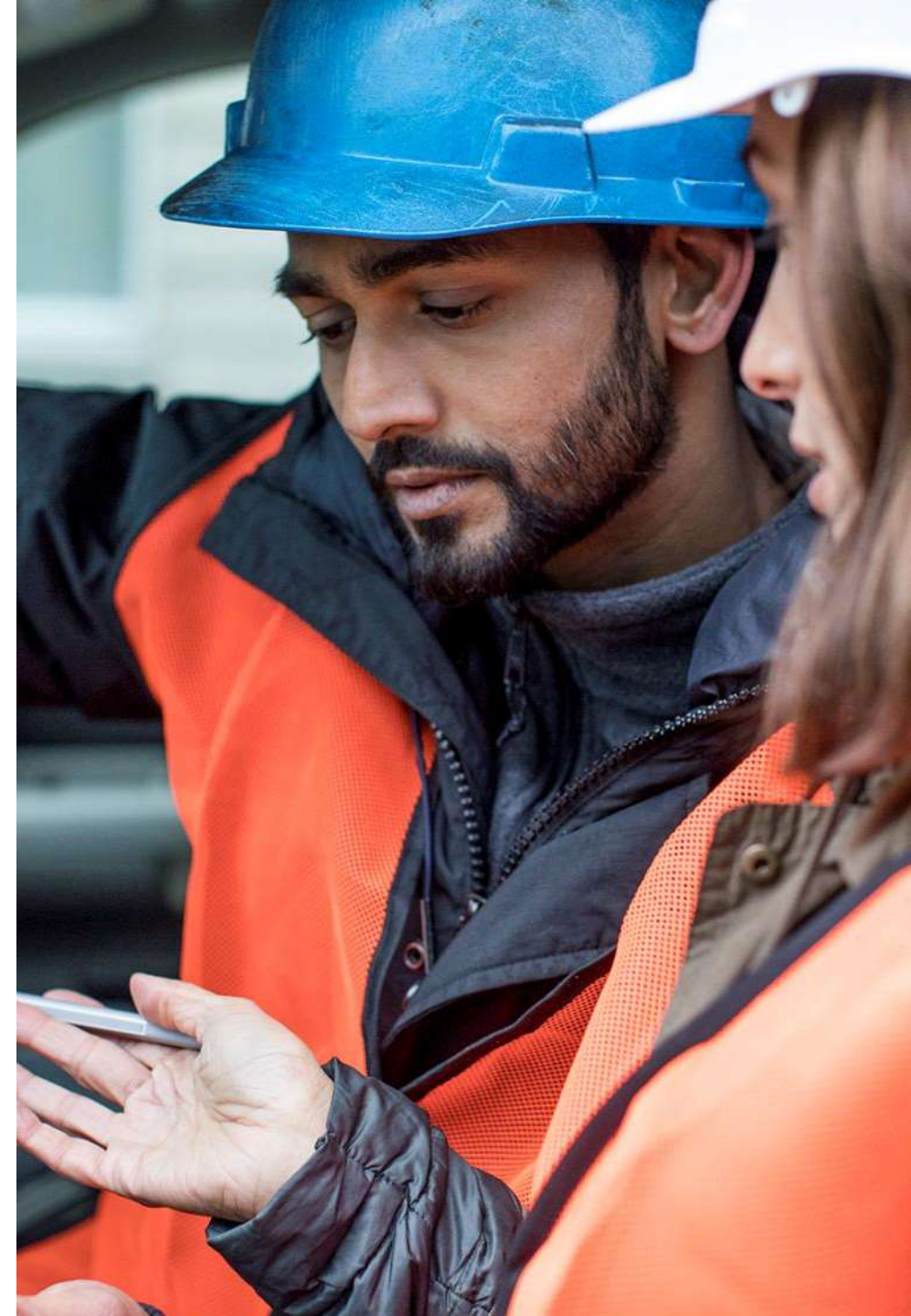
Foster culture and community

Broadcast interactive town hall meetings

Coordinate distributed teams with a hub for teamwork

Share and find best practices across the company

Build inclusive communities of interest





Train and upskill employees

Distribute onboarding material and training on any supported device

Share dynamic, role based content and video

Enable employees to find and build on the work of others

Retain and manage institutional knowledge in one place





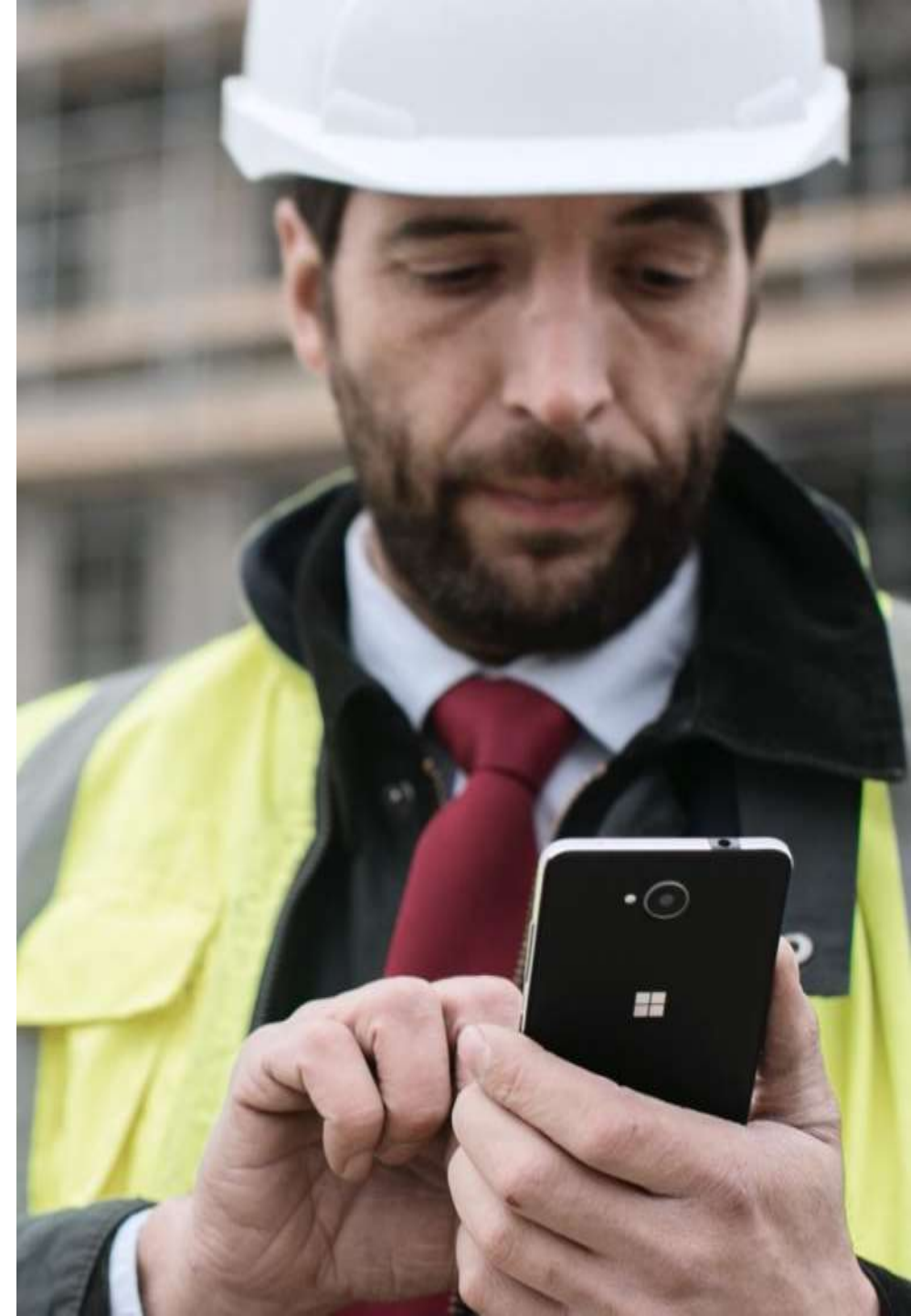
Digitize business process

Create, update and manage schedules and tasks

Automate everyday activities and workflows

Optimize resource allocation using IoT-based signals

Includes Microsoft StaffHub, the go-to tool for Firstline Workers





Deliver real-time expertise

Crowdsource new ideas and solutions

Work in context across physical and virtual space with mixed reality

Connect across remote sites on any device

Tap available talent when and where it's needed





Minimize risk and cost

Streamline management across devices, including kiosks and signage

Secure firstline access to corporate apps with identity-drive protection

Meet evolving workplace regulatory requirements

Accelerate GDPR compliance





**Firstline Workers
Drive Business Impact**

“ We’re partnering with Microsoft to reinvent the employee experience, to build a modern and secure workspace and to empower every employee, from the boardroom to the firstline worker, to achieve more everyday.

”

Brandon Antin

Vice President of Social Responsibility and Innovation

The Firstline Workforce

Next Steps

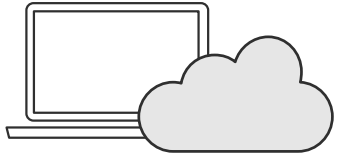
Go to Microsoft365.com to learn more

See what's already possible with [Value Discovery Workshop](#)

Get onboarding and adoption assistance with [FastTrack](#)







Microsoft 365 powered device

The best way to experience
Microsoft 365



Windows 10 S for Firstline Workers

Streamlined for security at a low Total Cost of Ownership



Cloud convenience plus
the power of apps



Windows 10 S on a
range of modern devices



Performance
that lasts



Microsoft-verified
security

Windows 10 S devices for Microsoft 365 F1



Stream 14 Pro
14" Ultralim
USD \$275
Available October 2017



Aspire 1
14" Ultralim
USD \$299
Available Q4 2017

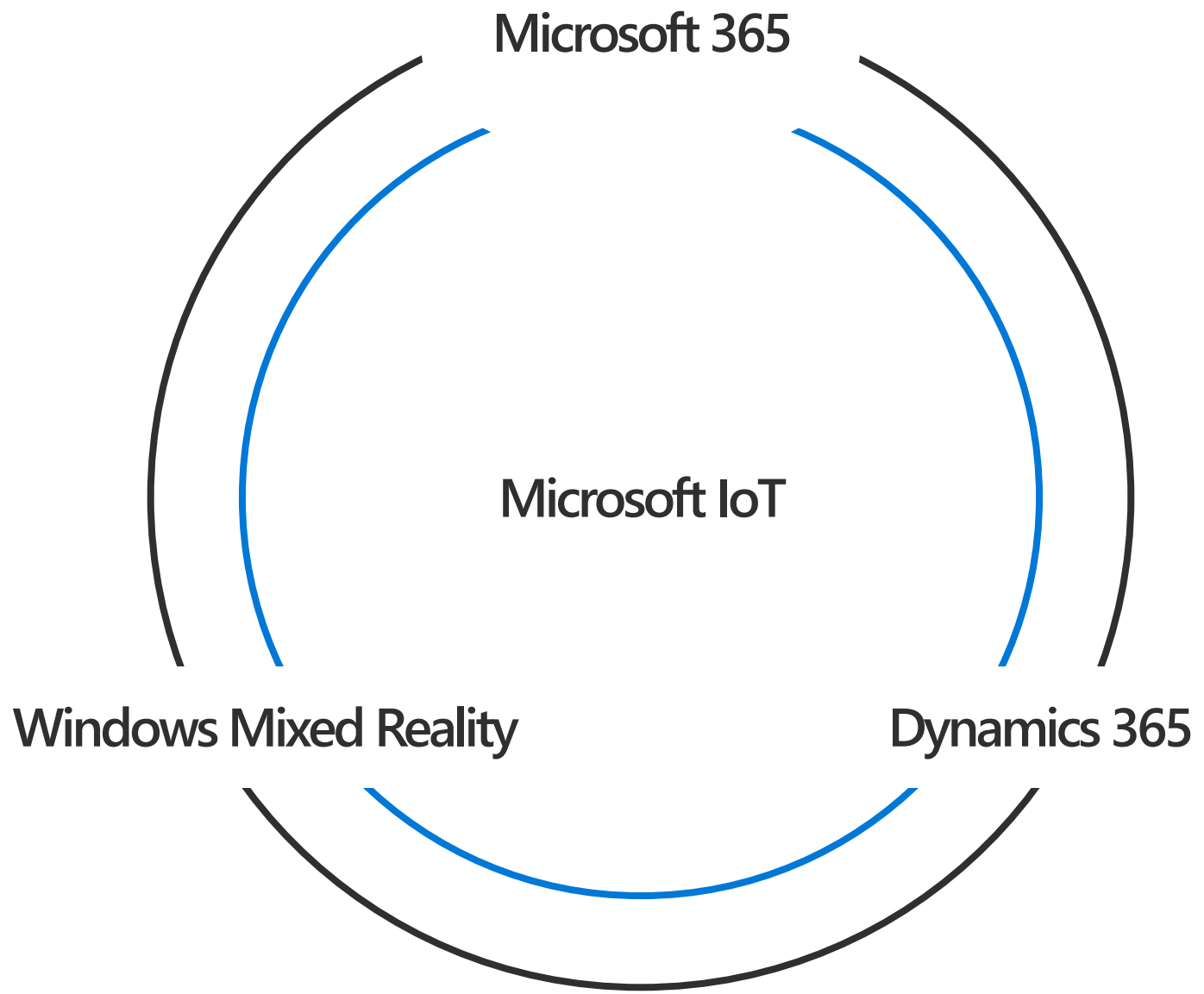


Swift 1
13" Ultralim
USD \$349
Available Q4 2017



V330
14" Ultralim
USD \$349
Available February 2018





Introducing Microsoft 365 F1

A complete, intelligent, secure solution for the Firstline Worker

Office 365 F1

Windows 10

Enterprise Mobility
+ Security

October 2017 – Microsoft 365 F1

		Office 365 F1	Microsoft 365 F1
		\$4.00 User / Month	\$10.00 User / Month
Office Applications	Office Online	•	•
	Business class email (2GB) and calendar on Outlook	•	•
Collaboration Services	SharePoint ¹ , Yammer and Groups	•	•
	Instant Messaging, Presence, Meetings and 1:1 HD Video chat / Audio	•	•
	Microsoft Teams Chat-based workspace	•	•
Content Storage & Consumption	2GB of cloud storage	•	•
	Enterprise Video Service and Portals	•	•
Schedule & Task Management	Microsoft StaffHub, PowerApps and Flow ²	•	•
Threat Protection	Microsoft Advanced Threat Analytics, Windows Defender Antivirus, Device Guard ³		•
Identity & Access Management	Azure Active Directory P1, Windows Hello, Credential Guard and Direct Access ³		•
Device & App Management	Microsoft Intune		•
	Windows AutoPilot, Fine Tuned User Experience, and Windows Analytics Device Health		•
Information Protection	Windows Information Protection and BitLocker		•

1. Cannot be Portal / Site administrators, No Site Mailbox, No Personal Site, Cannot Create Form

2. PowerApps are limited to consumption only, Flow limited to 750 per user per month

3. Not available on Windows 10 Enterprise E3 in S mode.

April 2017 - Office 365 F1 Update

		Before	After
		\$4.00 User / Month	\$4.00 User / Month
Office Applications	Office Online	•	•
	Business class email (2GB) and calendar on Outlook Browser	•	•
	SharePoint ¹ , Yammer and Groups	•	•
Collaboration Services	Instant Messaging, Presence, Meetings and 1:1 HD Video chat / Audio		•
	Microsoft Teams Chat-based workspace		•
Content Storage & Consumption	2GB of cloud storage		•
	Enterprise Video Service and Portals		•
Schedule & Task Management	Microsoft StaffHub, PowerApps and Flow ²		•

1. Cannot be Portal / Site administrators, No Site Mailbox, No Personal Site, Cannot Create Form
2. PowerApps are limited to consumption only, Flow limited to 750 per user per month

FastTrack for Microsoft 365

Move to the cloud with confidence

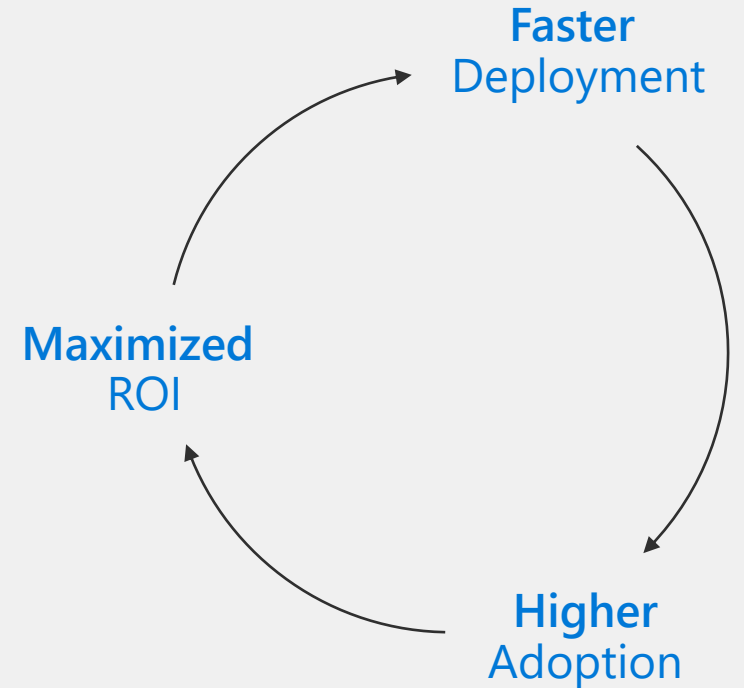
Migrate email, content, and light up Microsoft 365 services

Deploy and securely manage devices

Enable your business and gain end-user adoption

Delivered by Microsoft engineers as part of your subscription

Tight integration with qualified partners for additional services



[FastTrack.microsoft.com](https://fasttrack.microsoft.com)

